

## Know Your Number® Risk Tracker<sup>1</sup>: Baseline Population Analysis

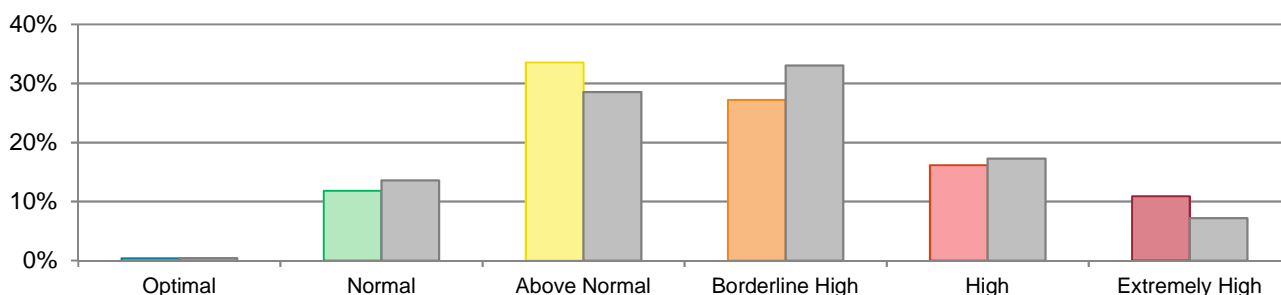
Study Population: 14319

Average Value: **67**

National Average: 65

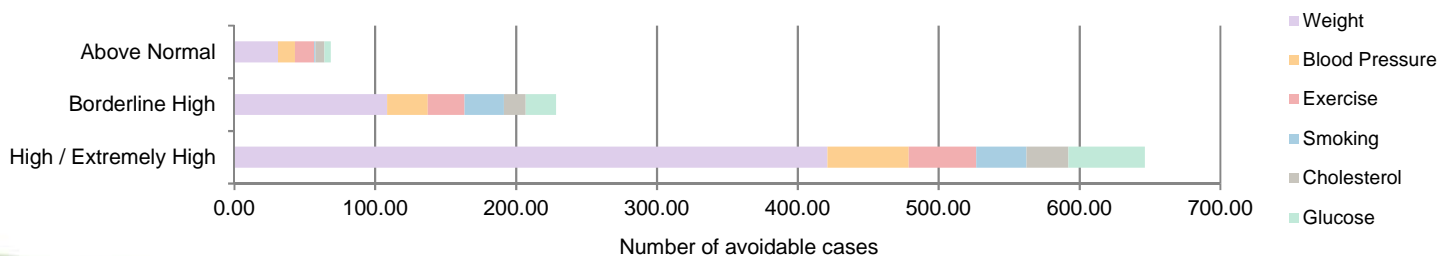
CATEGORY:	Optimal	Normal	Above Normal	Borderline High	High	Extremely High
RANGES:	0-20	21-40	41-60	61-80	81-100	> 100
Participants	55	1692	4803	3895	2316	1558
Study Population	0.4%	11.8%	33.5%	27.2%	16.2%	10.9%
National Average	0.4%	13.6%	28.6%	33.0%	17.3%	7.2%

### Study Population Compared to National Average



### Contribution of Risk Factors to Avoidable Cases within Risk Category

	Weight	Blood Pressure	Exercise	Smoking	Cholesterol	Glucose	Total
Above Normal	31.01	12.14	13.62	0.88	6.26	4.74	68.66
Borderline High	108.45	28.91	26.09	28.07	15.40	21.57	228.49
High / Extremely High	421.17	57.65	47.89	35.66	29.83	54.11	646.31
<b>Total</b>	<b>560.62</b>	<b>98.70</b>	<b>87.61</b>	<b>64.61</b>	<b>51.50</b>	<b>80.43</b>	<b>943.46</b>



### Avoidable Disease Burden Cost within Risk Category

	Diabetes	CHD	Stroke	CHF	COPD	Lung CA	Total
Above Normal	\$1,240,238	\$814,672	\$194,420	\$84,351	\$8,666	\$13,107	\$2,355,452
Borderline High	\$4,321,156	\$1,962,908	\$621,671	\$234,392	\$199,152	\$508,702	\$7,847,982
High / Extremely High	\$14,913,832	\$3,772,199	\$1,618,217	\$759,804	\$163,613	\$512,117	\$21,739,782
<b>Total</b>	<b>\$20,475,226</b>	<b>\$6,549,779</b>	<b>\$2,434,308</b>	<b>\$1,078,547</b>	<b>\$371,431</b>	<b>\$1,033,926</b>	<b>\$31,943,216</b>

<sup>1</sup> KYN Risk Tracker™ is the summation of a participant's overall health risk based on their individual disease risk for diabetes, CHD, and stroke combined with other biometric and clinical risk factor contributions. [www.knowyournumber.com](http://www.knowyournumber.com)